



# What's Eating Your Collection?

---

## Museum nuisance beetle *Reesa vespulae*

Adult beetle, also known as the American nuisance

Size: 2-4mm

Shape: Oval

Colour: Dark brown with pale golden band

Antennae: short club

Distinguishing features: covered in short hairs with a band of golden hairs on the wing cases.

Larvae are pests of: dead insects and insect collections

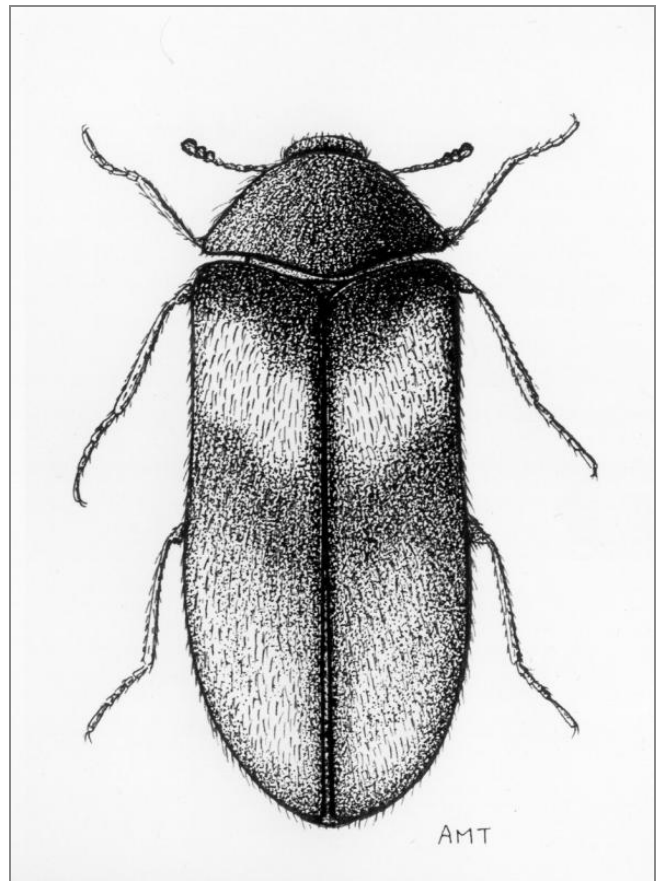
Damage: large amounts of cast skins and frass

Adults eat: nothing

Often found on: insect collections

Uncommon but appears to be spreading and causes severe damage to insect collections because the insects are parthenogenic, there are no males and the adult females can reproduce without mating.

The larvae can be confused with *Anthrenus*, *Trogoderma* or *Attagenus*.



## Related Objects



Museum nuisance larva  
*Reesa vespulae*



Reesa and Anthrenus  
adults on trap



Reesa infestation in  
beetle collection



Two spot carpet beetle  
*Attagenus pello* larva