



What's Eating Your Collection?

Berlin beetle *Trogoderma angustum*

Adult beetle.

Size: 3-5mm

Shape: oval

Colour: dark brown with patches of white hairs.

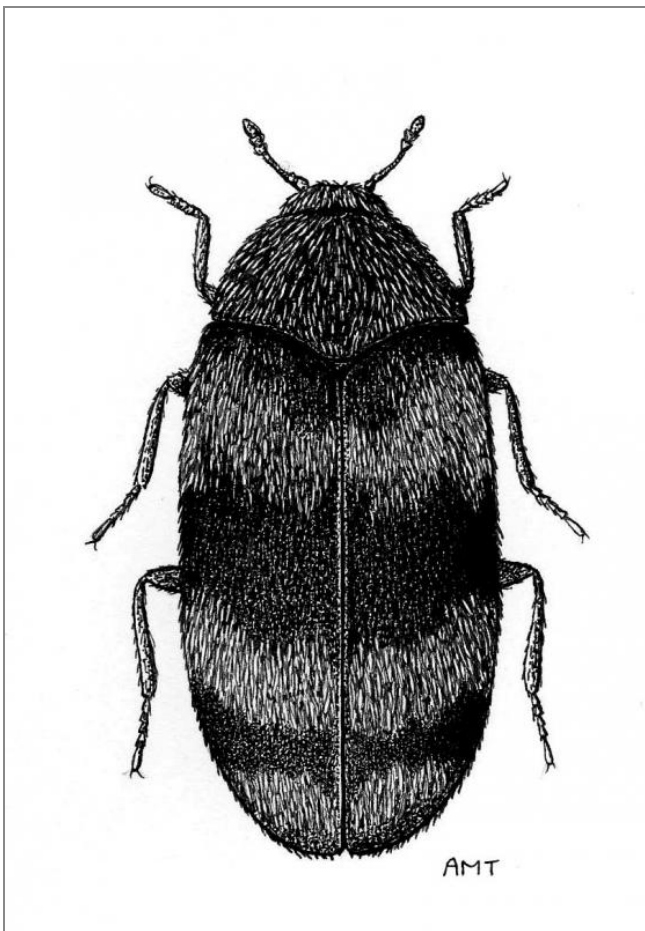
Antennae: clubbed.

Distinguishing features: no scales. Three bands of white hairs on wing cases.

Larvae are a pest of natural history collections, including bird skins and dried plants.

Damage is accompanied by cast larval skins and gritty frass.

This pest is common in Scandinavia and parts of Europe. It has been found in a number of museums and herbaria in the UK in the last few years (2017).



Related Objects



Trogloderma angustum
larvae and cast skin



Trogloderma cast skins



Trogloderma cast skins
on dried peas in an art
installation



Trogloderma larva
attacking slime mould
specimen