



What's Eating Your Collection?

Sinoxylon woodborer

Adult beetle found in imported wood

There are many species of these woodborers, sometimes called false powder post beetles or auger borers. They are members of the group Bostrychidae, which range in size from 2-15mm.

Size: 6mm

Shape: Squarish

Colour: Black

Antennae: Small with larger segments on the end. Not often visible

Distinguishing features: Head underneath, not visible from the top, thorax with spiky surface, wing cases with two large spikes at the back.

Larvae are pests of: starchy wood

Damage: Often extensive, with large quantities of fine, powdery frass.

Adults eat: Not known

Found on: Imported, starchy (new) wood.

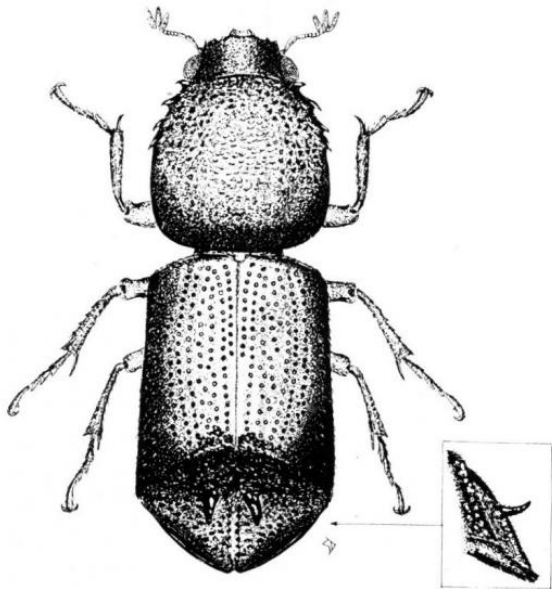


Fig. 116. *Sinoxylon anale* Lesne,
Bostrichidae.

Related Objects



Oriental wood borer
Heterobostrychus
aequilus