



# What's Eating Your Collection?

---

## Two spot carpet beetle *Attagenus pellio* larva

Full grown larva

Size: 1mm when first hatched to 10mm fully grown

Shape: Torpedo-shaped, tapering to the rear.

Colour: Dark brown bands

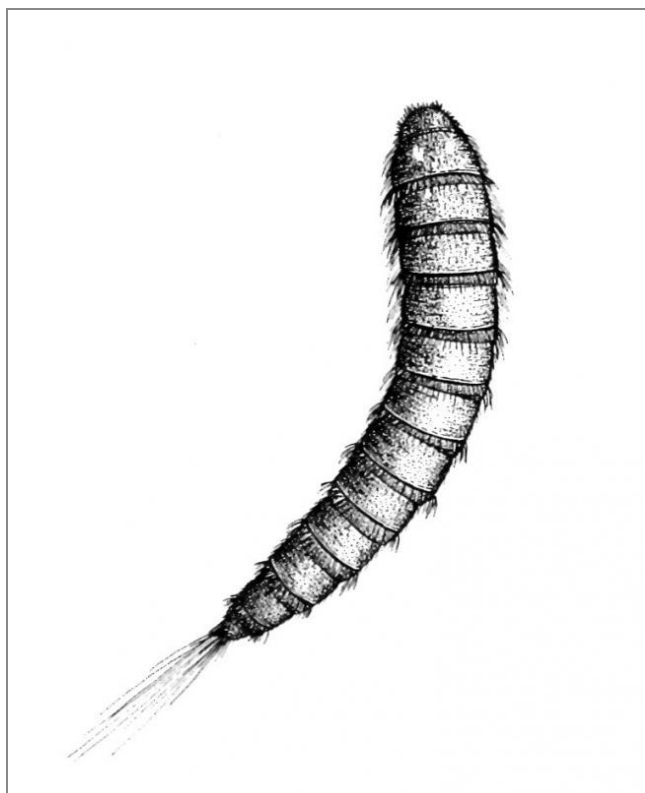
Antennae: Not visible

Distinguishing features: Hairs laid flat on back and there is a brush of long hairs at the tail end.

Note: These are extremely difficult to distinguish from vodka beetle larvae, *Attagenus smirnovi*.

Empty cast skins or moults are often found, particularly on textiles.

Larvae are pests of: Wool, fur, feathers. Larvae will eat insects and are common in historic houses



## Related Objects



Brown carpet beetle or  
Vodka beetle larva  
*Attagenus smirnovi*



Museum nuisance  
beetle *Reesa vespulae*



Two-spot carpet beetle  
*Attagenus pello*



Vodka beetle larvae  
*Attagenus smirnovi*