



# What's Eating Your Collection?

---

## Wood weevils *Pentarthrum huttoni* and *Euophryum* confine

Adult insects

Size: 2-4mm

Shape: narrow, cylindrical

Colour: black

Antennae: short, with a distinctive crank ("L" shape) and a club on the end.

Distinguishing features: The head has a distinct snout, called a rostrum, with the jaws on the end. The antennae of all weevils have a distinct crank ("L" shape) half way along. See photos.

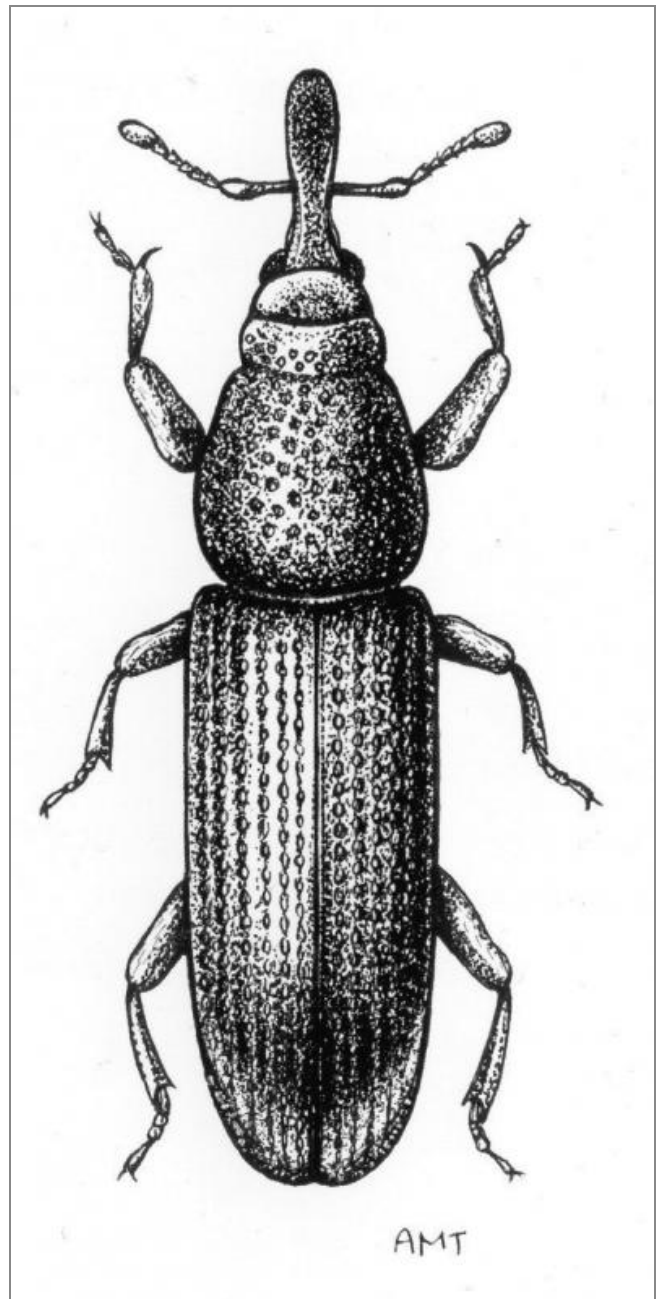
Larvae eat: very damp wood

Damage is: tunnels in wood, grooves on the surface and small (1-1.5mm) exit holes. The frass is fine but gritty.

Adults eat: The surface of the wood by grazing.

Other info: The two main species of wood weevils are extremely difficult to tell apart. The weevil at the top of the photo is *Euophryum* and the one below is *Pentarthrum*. As both have very similar life cycles and food requirements accurate identification to species is not essential. Presence of wood weevils in numbers is a sure sign that there are quantities of damp wood.

Wood weevils are much smaller than the related grain weevils and rice weevils, (*Sitophilus*), which infest whole grain.



## Related Objects



Clover weevil *Sitona lineatus*



Grain weevil *Sitophilus granarius*



Rice weevil *Sitophilus oryzae*



Wood weevil damage