



What's Eating Your Collection?

Australian spider beetle *Ptinus tectus*

Adult

Size: 3-4mm

Shape: round thorax, round body. Spider-like.

Colour: Dark brown

Antennae: Long, no club

Distinguishing features: Wing cases with lines and hairs, spider-like.

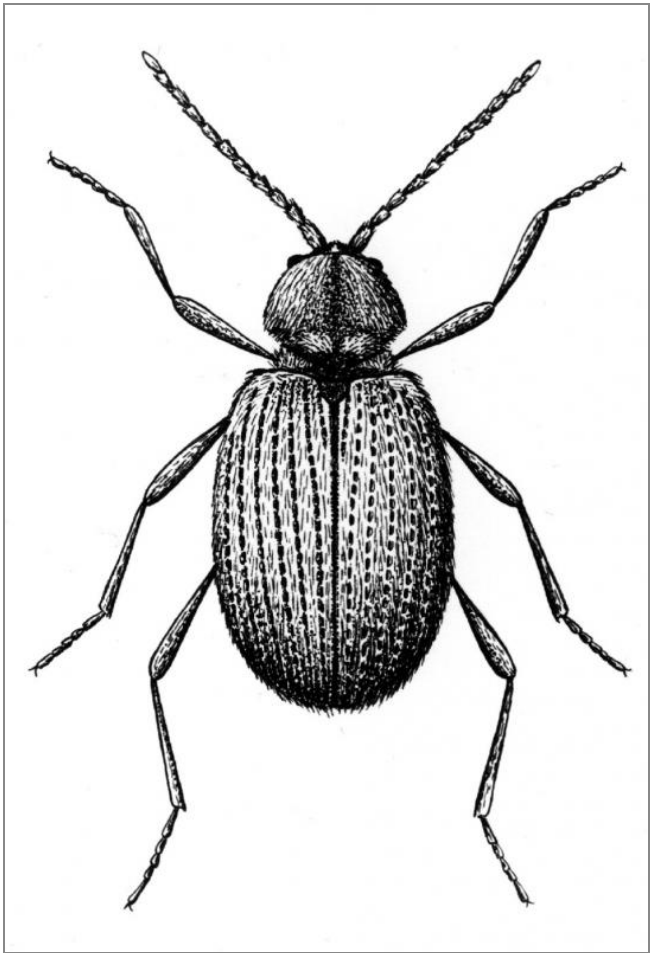
Larvae are scavengers of: dried food, dried plants.

Damage: Round exit holes, tunnels in food, frass.

Adults eat: Very little but do drink water and are long lived

Often found on: bird's nests, dead animals and insects

Note: the larvae excavate cavities when they pupate, which they do in a silk cocoon. They may damage books, paper and wood.



Related Objects



Australian spider beetle
larva *Ptinus tectus*



Globular spider beetle
Trigonogenius globulus



Golden spider beetle
Niptus hololeucus



Herbarium specimen
damaged by spider
beetle



Spider beetle damage to
shelf



White marked spider
beetle *Ptinus fur*