



What's Eating Your Collection?

Australian carpet beetle *Anthrenocerus australis*

Adult beetle.

Size: 2-4mm

Shape: rounded

Colour: very dark with patches of small white hairs.

Antennae: small, tight club.

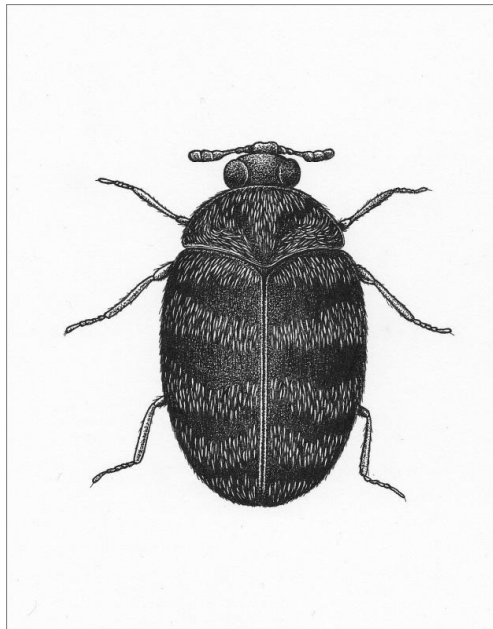
Distinguishing features: no scales. Adult is much darker than the Varied Carpet Beetle.

Larvae are a pest of wool, fur, feathers and other animal protein.

Damage is small neat holes often with cast larval skins with gritty frass.

This is a serious domestic pest in Australia but is rare in the rest of the world.

An infestation was discovered in an office in the V&A museum in 2010. They have also been found in Kensington Palace and a flat in Bradford in 2013.



Related Objects



Anthrenocerus australis
larva



Dark carpet beetle
Anthrenus fuscus