



What's Eating Your Collection?

Silverfish *Lepisma saccharinum*

Adult

Size: 10-15mm

Shape: Long, tapered, torpedo-like. Often contracts on traps.

Colour: Silvery grey, can darken on traps

Antennae: Very long and thin

Distinguishing features: Body is segmented, has three long bristles at the back end (cerci). Silverfish have nymphs (miniature version of the adult) and not larvae. They are much paler and grow from 1-10mm.

Adults and nymphs are pests of: books, paper, archives and occasionally textiles.

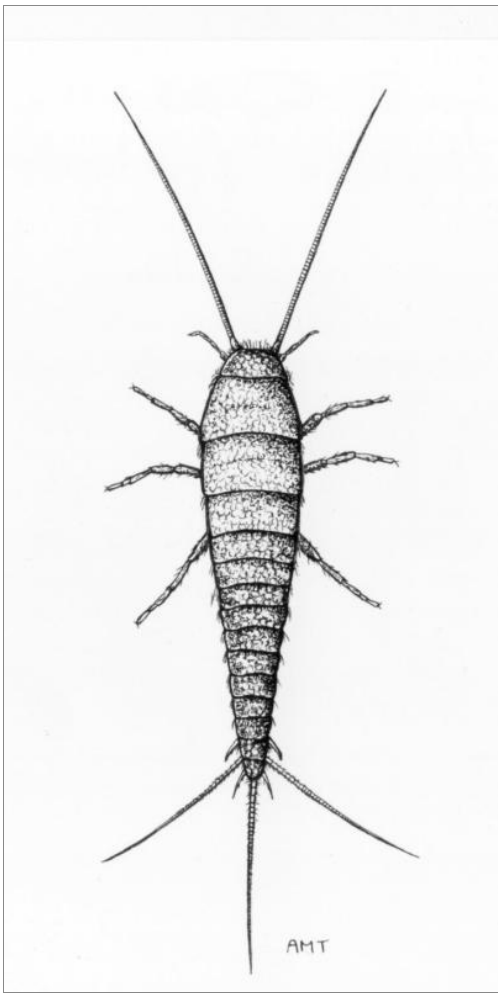
Damage: Both adults and nymphs scrape the surface resulting in thinning and ragged holes.

Often found in: Cool, damp conditions. Large numbers indicate that there is a problem with moisture.

May be confused with Firebrat which needs warm, damp conditions.

Note: The name changed from *saccharina* to *saccharinum* in 2018. ICZN article 30, opinion 24





Related Objects



Firebrat *Thermobia domestica*



Grey silverfish
Ctenolepisma longicaudatum



Silverfish damage inside book



Silverfish damage to paper



Silverfish grazing damage



Wallpaper damaged by silverfish