



## What's Eating Your Collection?

---

### Plaster beetle *Adistemia watsoni*

Adult beetle

Size: 1-2mm

Shape: Very thin, abdomen notably larger than head and thorax

Colour: Orangey brown

Antennae: Medium with a loose club

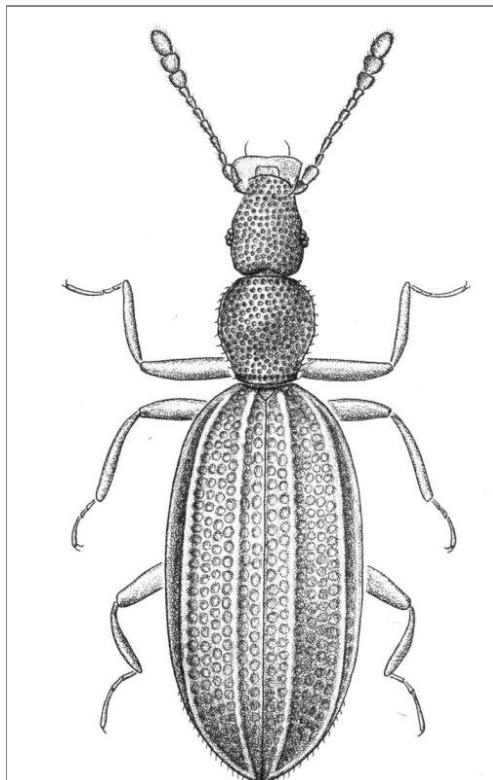
Distinguishing features: Large abdomen relative to rest of the body.

Larvae are pests of: mould and mould spores

Damage: Larvae can occasionally damage damp paper

Adults eat: Not known

They are indicators of high local humidity. One or two specimens do not indicate a problem, large numbers indicate that the damp source needs to be investigated.





### Related Objects



Fungus beetle *Corticaria*  
sp



Fungus beetle  
*Cryptophagus*  
*acutangulus*



Plaster beetle *Enicmus*  
*fungicola*