



What's Eating Your Collection?

Brown carpet beetle or Vodka beetle *Attagenus smirnovi*

Adult male beetle

Size: 4-6mm

Shape: oval

Colour: brown with black head and thorax

Antennae: Final segment is one long club.

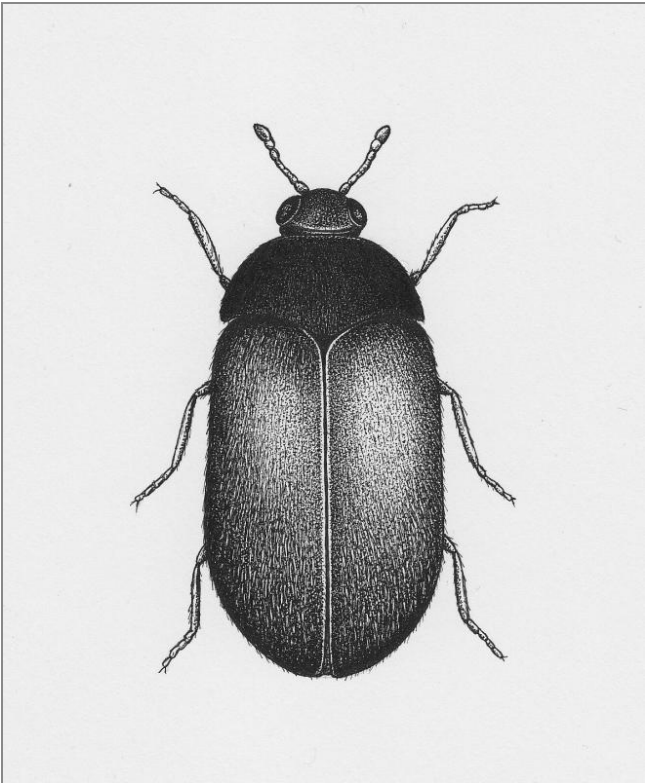
Distinguishing features: covered in very short downy hairs. Females are usually larger than males with a shorter antennal club.

Larvae are pests of: wool and organic debris

Damage: usually cast skins and frass

Adults eat: very little

Often found on: organic debris in dead spaces and voids in historic houses and museums. Mainly confined to London in the UK but an important pest in parts of Northern Europe where it is known as the Brown Carpet beetle.



Related Objects



Two-spot carpet beetle
Attagenus pello



Vodka beetle larvae
Attagenus smirnovi