



# What's Eating Your Collection?

---

## Woodworm / Furniture beetle *Anobium punctatum*

Adult Furniture beetle, also called Woodworm

Size: 2-5mm

Shape: longish oval

Colour: dark brown (dull)

Antennae: medium, last few segments triangular

Distinguishing features: head not visible from above, thorax has distinct hump when seen from the side, lines of punctures on the wing cases. Life cycle can be as long as five years. The adults are much smaller than Deathwatch beetle.

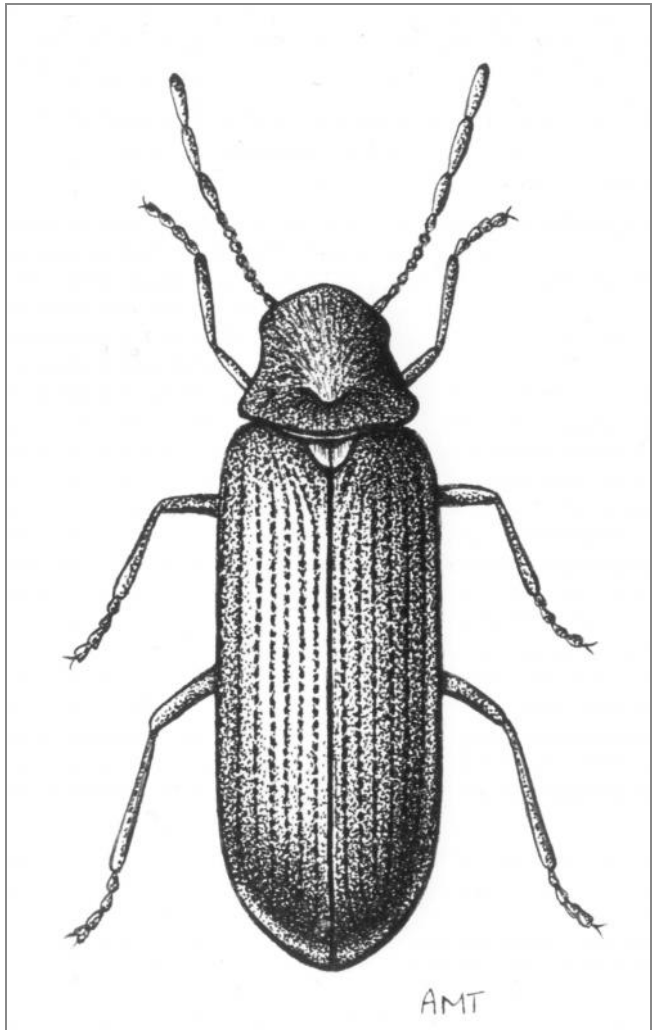
Larvae eat: sapwood of hardwoods, plywood, occasionally books

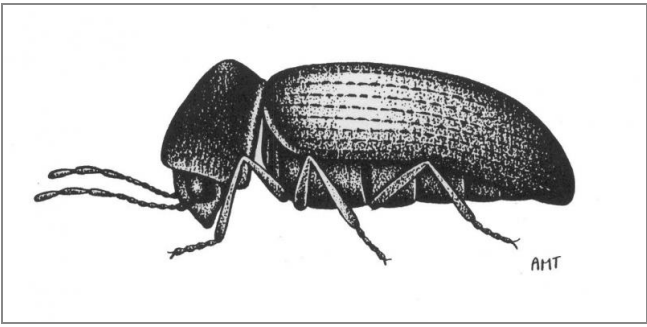
Damage is: tunnels and small (1.5-2mm) round exit holes, copious gritty frass. The frass forms conical piles if undisturbed.

Adults eat: very little but will bite their way out of the wood.

Other info: only found in objects and building timbers when humidities are high, above 60%. Damage to sapwood can be severe but heartwood is very rarely attacked. Adults will fly to the light in spring and early summer when it is warm.

Can be confused with Biscuit beetle.





## Related Objects



Anobium damage



Anobium damaged floor board



Anobium emergence holes from sapwood



Anobium frass



Anobium frass



Anobium frass piles



Biscuit beetle  
*Stegobium paniceum*



Death watch beetle  
*Xestobium rufovillosum*



Fan bearing wood borer  
*Ptilinus pectinicornis*



*Korynetes* sp