



What's Eating Your Collection?

White marked spider beetle *Ptinus fur*

Adult female beetle which is darker and more rounded than the male

Size: 3-4mm

Shape: round thorax, round body. Spider-like.

Colour: Dark brown with white hairs

Antennae: Long, no club

Distinguishing features: Wing cases with lines and hairs, spider-like.

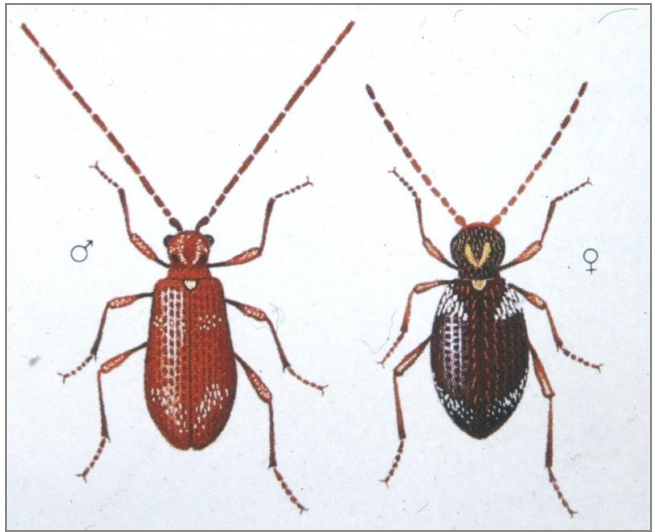
Larvae are scavengers of: dried food, dried plants.

Damage: Round exit holes, tunnels in food, frass.

Adults eat: Very little but do drink water and are long lived

Often found on: bird's nests, dead animals and insects

Note: Less common than Australian or Golden, but increasingly found in historic houses. They may damage books and paper.



Related Objects



Australian spider beetle
larva *Ptinus tectus*



Australian spider beetle
Ptinus tectus



Six spot spider beetle
Ptinus sexpunctatus